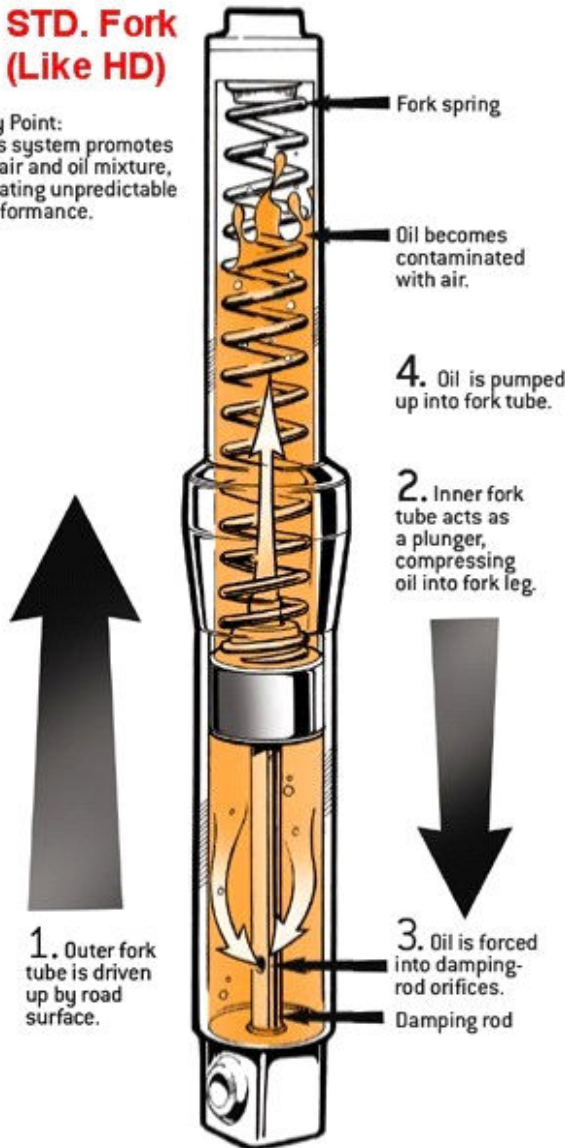


STD. Fork (Like HD)

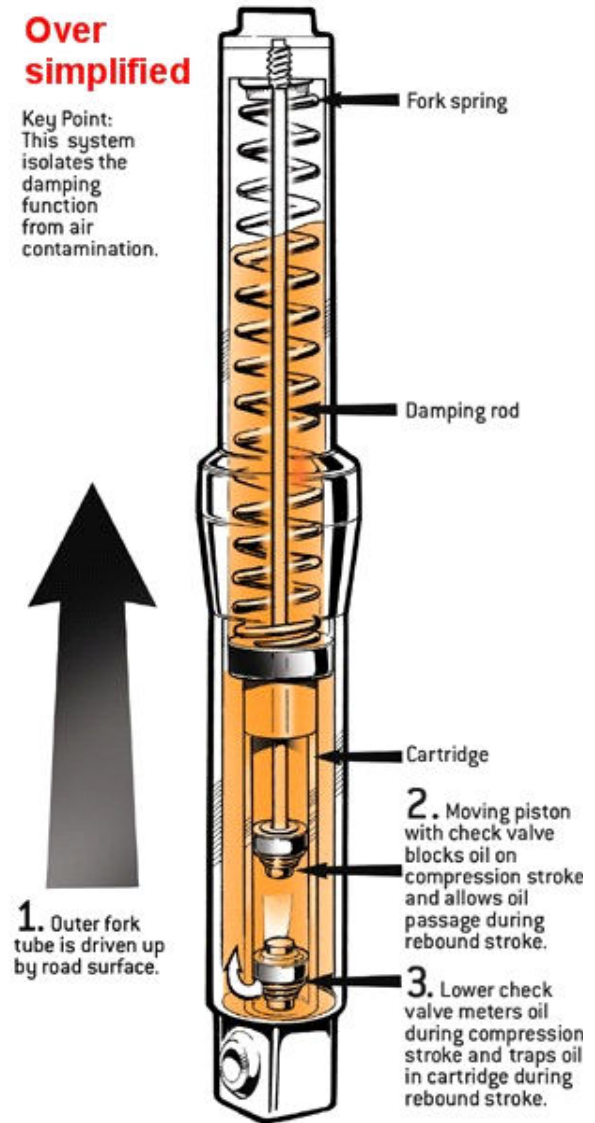
Key Point:
This system promotes
an air and oil mixture,
creating unpredictable
performance.



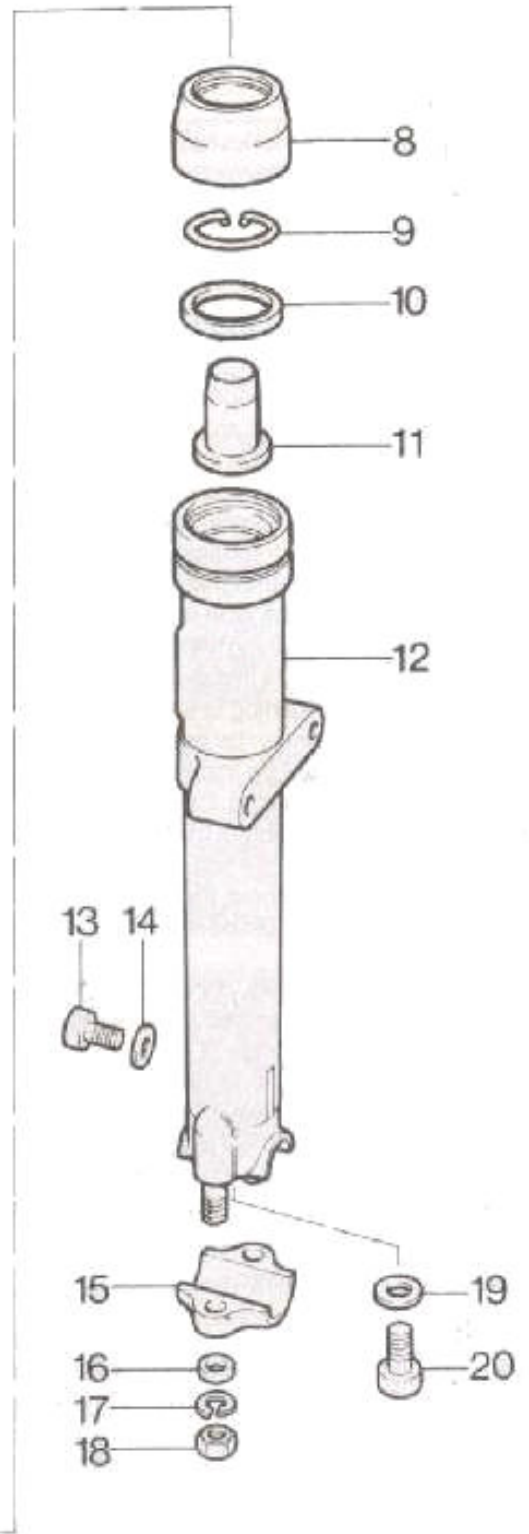
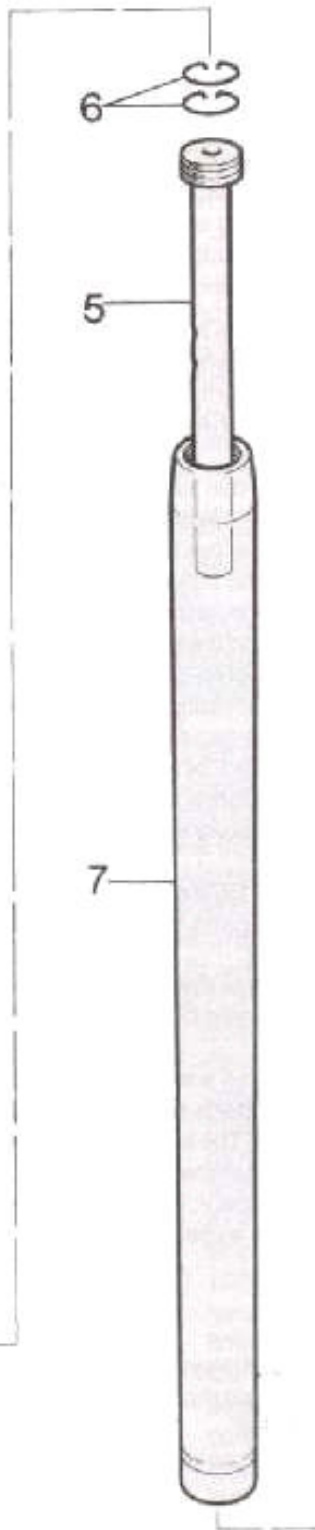
Standard Fork

Over simplified

Key Point:
This system
isolates the
damping
function
from air
contamination.



Cartridge Fork

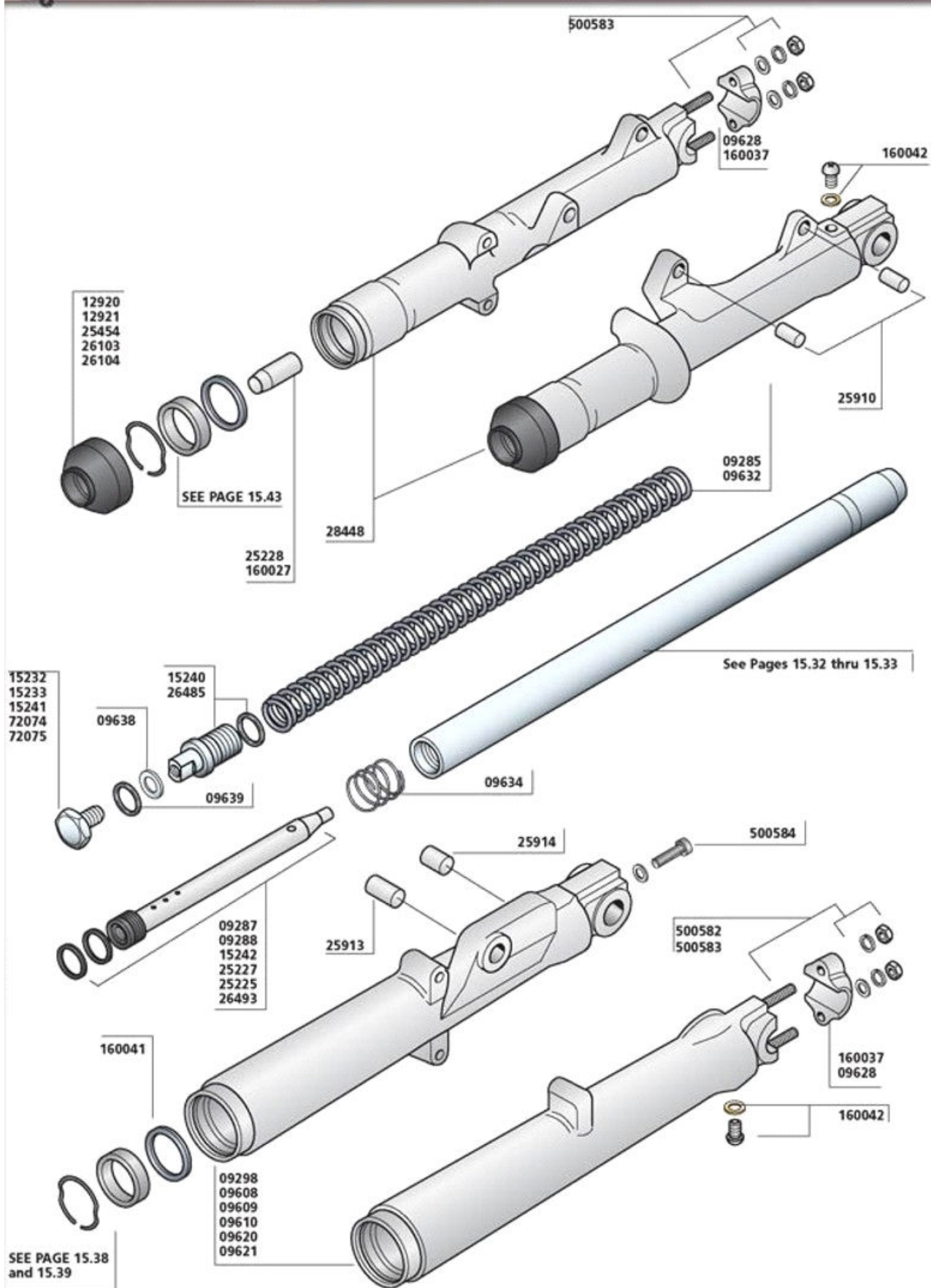


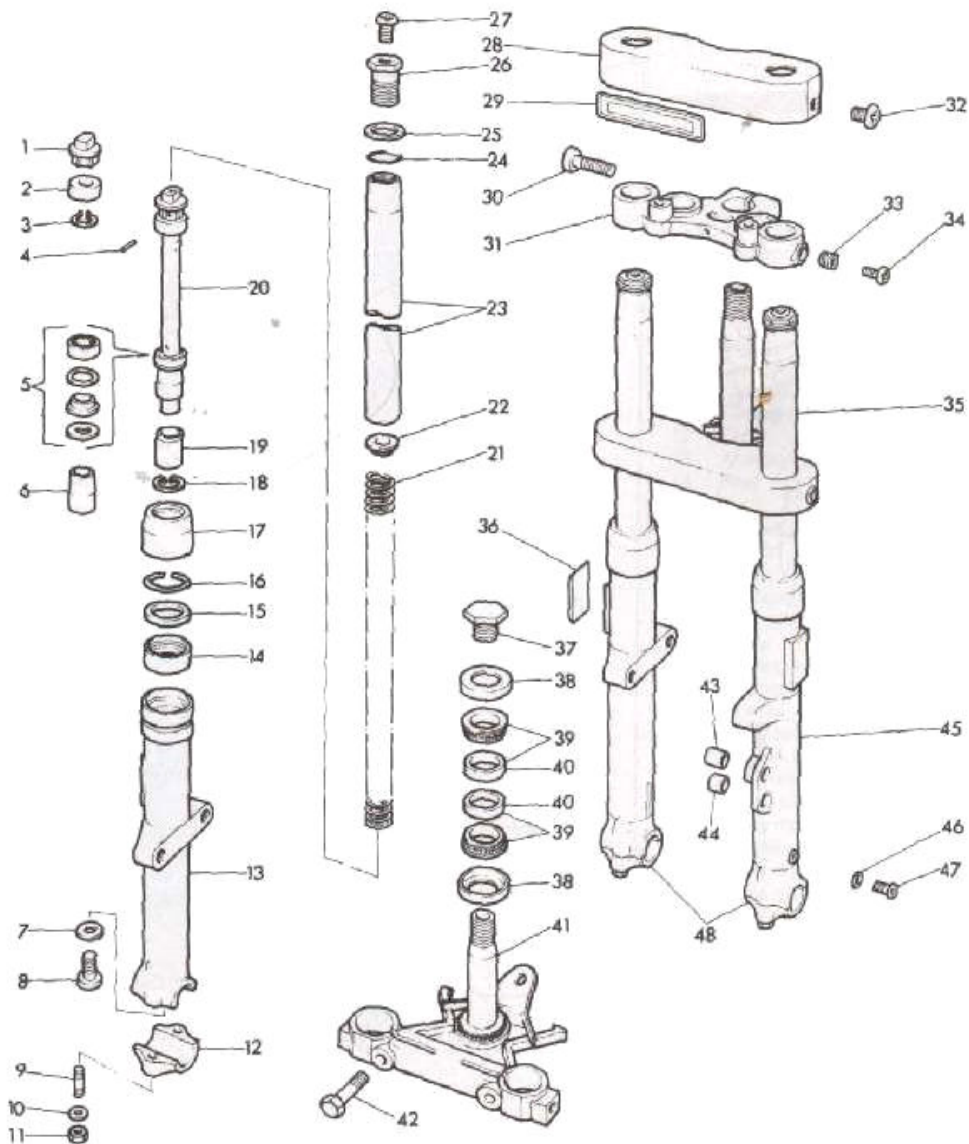
8.10 Exploded view of a typical later model fork leg

- 1 Cap
- 2 Plain washer
- 3 O-ring
- 4 Fork spring
- 5 Damper tube
- 6 Wear rings
- 7 Fork tube
- 8 Dust boot
- 9 Circlip
- 10 Oil seal
- 11 Damper rod seat or sleeve
- 12 Slider
- 13 Drain plug
- 14 Sealing washer
- 15 Axle cap
- 16 Plain washer
- 17 Spring washer
- 18 Nut
- 19 Sealing washer
- 20 Allen-head bolt

Early 1990's







Typical FX model fork components

- | | | | | | |
|----|-----------------------|----|-----------------------|----|----------------------------------|
| 1 | Upper piston seat | 17 | Dust boot | 33 | Threaded insert |
| 2 | Upper damper piston | 18 | Circlip | 34 | Cover screw |
| 3 | Snap-ring | 19 | Lower piston | 35 | LH fork leg (complete) |
| 4 | Roll pin | 20 | Damper rod (complete) | 36 | Reflector |
| 5 | Damper valve assembly | 21 | Fork spring | 37 | Fork stem retaining bolt |
| 6 | Damper rod seat | 22 | Upper spring seat | 38 | Dust shield |
| 7 | Washer | 23 | Fork tube | 39 | Tapered roller bearing |
| 8 | Allen-head screw | 24 | O-ring | 40 | Outer bearing race |
| 9 | Stud | 25 | Washer | 41 | Lower triple clamp/steering stem |
| 10 | Plain washer | 26 | Cap | 42 | Pinch bolt |
| 11 | Nut | 27 | Screw | 43 | Caliper upper bushing |
| 12 | Axle cap | 28 | Cover | 44 | Caliper lower bushing |
| 13 | Fork slider | 29 | Trim | 45 | Slider |
| 14 | Oil seal | 30 | Upper pinch bolt | 46 | Sealing washer |
| 15 | Backing washer | 31 | Upper triple clamp | 47 | Drain plug |
| 16 | Circlip | 32 | Screw | 48 | Axle clamp |

FX