

Remove and Replace Your Sliders

This is a universal install and I am using a few different models but almost all of the procedures are similar. By Howard Messner of Motorcyclemetal.com “Dogg” has a 08, & “Mike” has a 67.



1967 Pan/Shovel Electra Glide



2004 FL Fig. 1a.

Getting Started; Jack up the bike so the forks will clear the bottom triple trees. The more tools you have the more comfortable you will be.

Front Brakes

For 2000 to 2007 FL Models Fig. 1a.

1. Remove the two calipers as outlined on my web site **Here**; <http://motorcyclemetal.com/subpage5.html>
2. Take the calipers off and wrapped them in a rag so as to not scratch anything. You can lay them over the highway pegs, wire, or tape the calipers out of the way. Do not remove the hydraulic hoses.



3. Remove the axle, wheel & spacers, etc.
4. Remove the fender
5. You may wish to clean the calipers out while you are there and check your pads & rotors. Inspect all as you will have the time.



6. Use a 6mm long shanked Allen socket or impact sockets as shown below in Fig. 1c An impact gun is very helpful as it spins the bolt out. If you do not have one at your disposal; remove these bolts using the method of sliding a screwdriver in one of the caliper bolt holes and turning in the opposite direction while putting force on the ratchet.



For 2008 FL Models

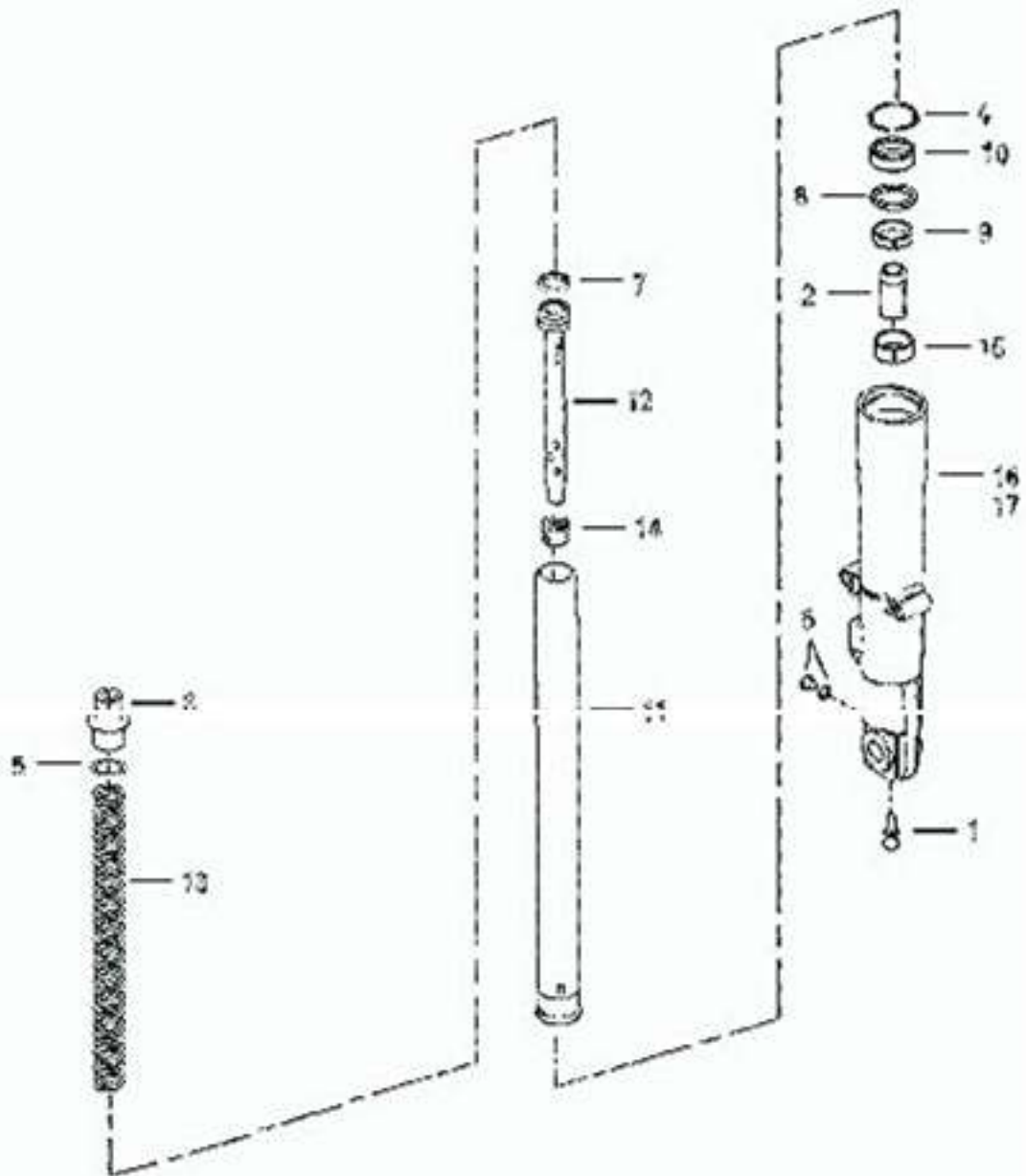
1. Push back on the ABS tab per the manual to release the wire to the speed sensor.
2. Follow the above instructions



Slider Removal

1. Let the forks drain after removing the 6mm bolts.

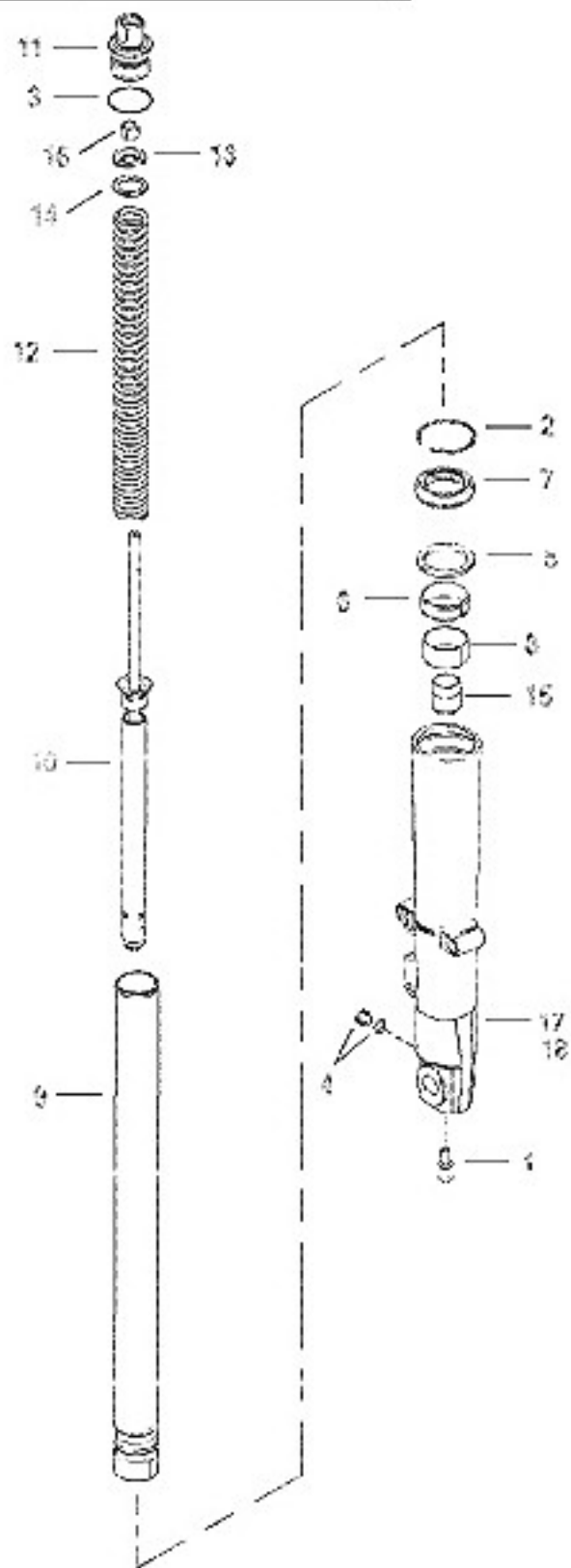
FRONT FORK - LEFT (NONFAIRING MODELS)



FLHT DD2Y Touring Electra Glide Standard (2002) (Ultra) : FRONT FORK - LEFT (FAIRING MODELS)

Ref #	Part Number	Qty	Description
1	45405-75A	1	SCREW
2	45842-77A	1	RETAINING RING, oil seal
3	45845-77	1	O-RING, slider tube plug
4	45858-77	1	DRAIN SCREW, with washer
5	45865-84	1	SPACER, slider
6	45866-84	1	BUSHING, slider
7	45875-84A	1	OIL SEAL
8	45940-84	1	BUSHING, fork leg
9	45972-02	1	TUBE ASSEMBLY ,
10	46209-02	1	DAMPER, fork (left)
11	46229-02	1	FORK CAP (left)
12	46235-02	1	SPRING, fork (left)
13	46236-02	1	SEAT, fork spring (left)
14	46237-02	1	WASHER, spring (left)
15	46238-02	1	OIL LOCK, (left)
16	46262-02	1	LOCK NUT, damper (left)
17	46495-02	1	FORK ASSEMBLY, complete left
18	46496-00	1	SLIDER, fork

FRONT FORK - LEFT (FAIRING MODELS)





5. Gently twist a screwdriver in the bottom bushing.

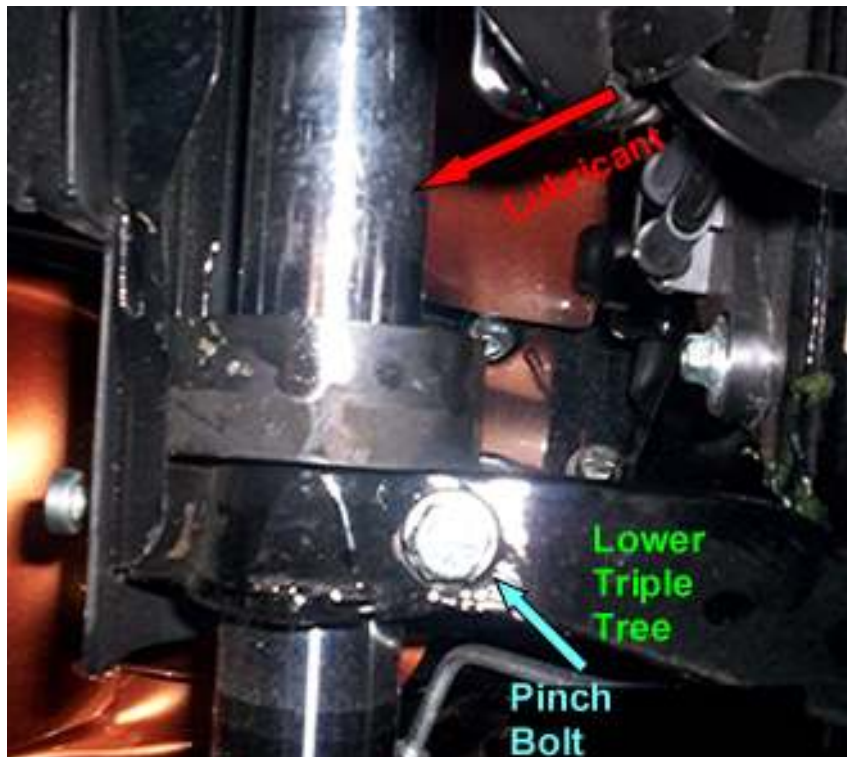
6. Remove the outer fairing, passing lamps, signals, and chrome cover underneath to get at the two bolts that hold the “cowbells”.



7. Remove the rear bolts on the “cowbells” by turning the fork either way for each side.

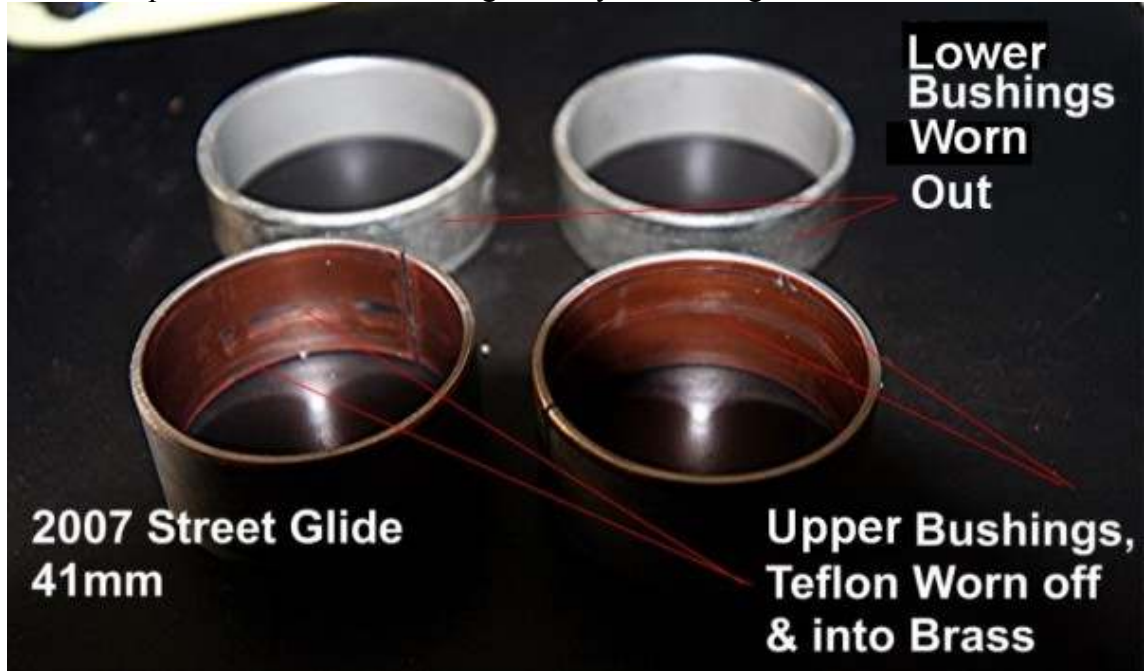


8. Remove the ignition and fairing cap to gain access to the top plugs of the forks.
9. Remove top fork plugs.



10. Lubricate the top of the rubber fork stops to slide up the tubes.
11. Loosen the pinch bolts on the lower triple trees.

12. I recommend inspecting the upper and lower bushings and replacing the dust seal. Please review the photo below & use it as a guide of your bushings.



13. You can purchase a seal rebuild kit that included:

- new oil seals
- new top seals
- new copper washers for the 6mm bottom bolts
- new retaining clips and some o-rings for the drain plugs.
- You can also buy a set of chrome drain screws.
- HD Screaming Eagle Heavy Duty Fork Oil.

INSTALL

14. You can make a 1 ½" PVC coupler and ground down the outside edge of one end to use to seat the seal.

15. Install "cowbells".



16. Install the stop on the bottom and the slider bushing and top spacer.

17. Place a dab of grease on the oil stop to hold it on the bottom.

18. Install the 6mm Allan Head bolts in the bottom with new washers and torque to 18' pounds.





19. Slid the oil seal down from the top and use a coupler and a length of 2" PVC to drive the seal down and seat it.



20. The seal is driven down carefully, visually inspect and view the retaining clip groove.





21. Install the drain plugs **if** you took them out to drain your oil.



22. Measure 10.8 oz of your choice of fork oil and pour it through a funnel into the top of the forks. Pump it a couple of times to get any air out of the fork tubes.



and fork cap.

26. Torque pinch bolts in lower triple trees.

27. Install chrome plate and passing lamp/turn signal bar.

28. Install front fairing, fender, wheel, calipers, and install the inner fairing cap and ignition.

It took me longer to write this than it does to do the job. Special thanks to Mike, Eric, and Dogg.

23. Slid the fork tubes through the bottom of the triple tree (s). Verify installing the rubber fork stop(s) and slid the fork stops down as the fork tube as you are installing the fork tube in the triple trees. Use lubrication.
24. Snug up pinch bolts in lower triple trees to hold fork tubes.
25. Install new fork cap seal(s) & install fork caps making sure the fork tubes can still move upwards. Do not permit a gap between the fork tube